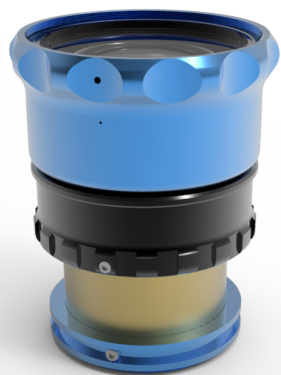


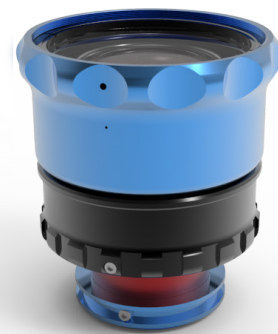
SANKOR 16D



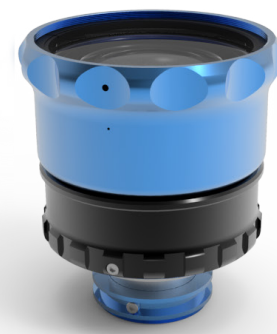
SK ES CINELUX



HYPERGONAR 16



ISCO ULTRA STAR



KOWA VIDOSCOPE



KOWA BH/8Z/16H

RECTILUX 3FF-W

Product Overview

Lightweight Version 2.0

Enables single focus operation of anamorphic projection lenses

Support for 40mm to 300mm taking lenses, zoom or prime based (based on APS-C sensor DSLRs)

Support for 4K resolution

Single coated multi-element focusing optics (uncoated option)

Super smooth ten start focusing helicoid with 170 degree throw for slick & fast focusing

Easy self-assembly using customer owned CinemaScope. Illustrated installation guide supplied

Rectilux single focus anamorphic adapters unleash the power of vintage optics from Europe and the Far East

Rectilux single focus anamorphic adapters have neutral optical transfer function, multi-element focusing optics to preserve the character of the base anamorphic engine and of the spherical taking lens

Product Specification

Closest focusing distance 0.60m @ F/1.8

Filter thread M95 x 0.75mm

Max. diameter 105mm

Min length 86mm

Internal bore 75mm

Weight 425g (excluding optics)

Supplied Accessories

Internal coupling ring(s) for one anamorphic lens of choice

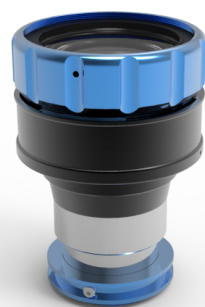
RectiGrip colour matched threaded taking lens coupling ring

Fully illustrated & easy installation guide

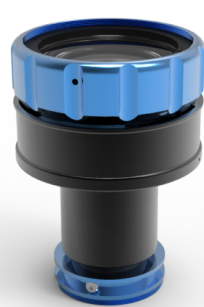
(Custom RectiGears are available from Shapeways)



MOLLER 32



SANKOR 16C



ISCO ANIMEX/S8



KOWA 16S

RECTILUX 3FF-S

Product Overview

Ultra lightweight Version 2.0

Enables single focus operation of anamorphic projection lenses

Support for 50mm to 200mm taking lenses, zoom or prime based (based on APS-C sensor DSLRs)

Support for 4K resolution

Single coated multi-element focusing optics (uncoated option)

Super smooth ten start focusing helicoid with 180 degree throw for slick & fast focusing

Easy self-assembly using customer owned CinemaScope. Illustrated installation guide supplied

Rectilux single focus anamorphic adapters unleash the power of vintage optics from Europe and the Far East

Rectilux single focus anamorphic adapters have neutral optical transfer function, multi-element focusing optics to preserve the character of the base anamorphic engine and of the spherical taking lens

Product Specification

Closest focusing distance 0.40m @ F/1.8

Filter thread M72 x 0.75mm

Max. diameter 80mm

Min length 51mm

Internal bore 65mm

Weight 250g (excluding optics)

Supplied Accessories

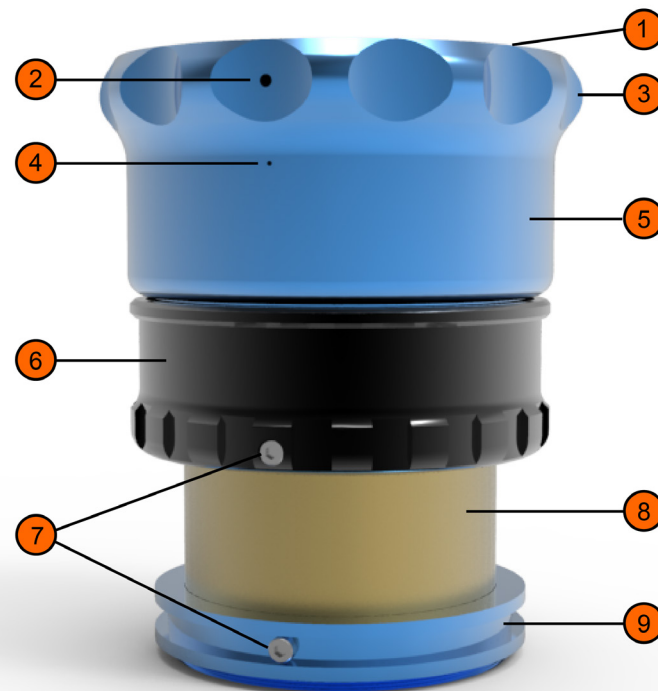
Internal coupling ring(s) for one anamorphic lens of choice

RectiGrip colour matched threaded taking lens coupling ring

Fully illustrated & easy installation guide

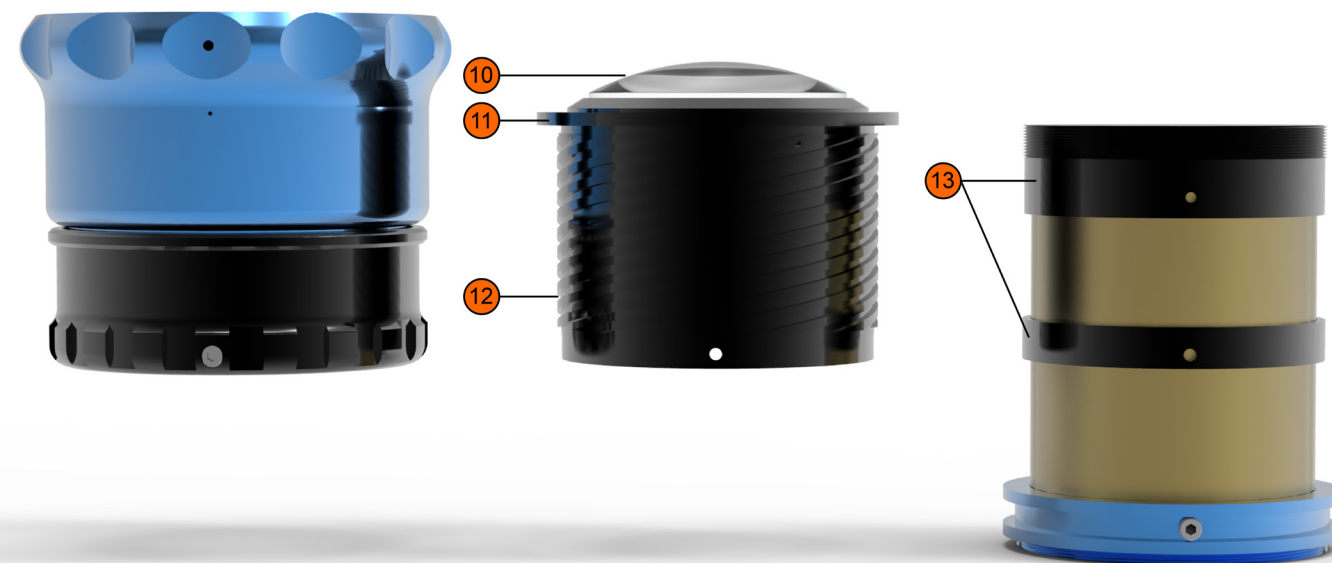
ISCO Animex version includes infinity modification extender ring with installation instructions.

(Custom RectiGears are available from Shapeways)



RECTILUX 3FF INSIDE & OUTSIDE

- 1 95mm filter thread (3FF-W) and 72mm filter thread (3FF-S), means affordable and commonly available filters
- 2 Infinity focus adjustment screws
- 3 Bulbous thumb and finger grip for maximum front lens protection and tactile focus feel
- 4 Vent holes to eliminate back pressure build-up during fast focusing
- 5 High inertia focus ring revolving about a ten start helicoid for smooth and precise focusing with ample space for mounting a third party focus gear ring
- 6 Focus guard that doubles as a convenient place for rail mounted lens support when required and it is situated near to the lens centre of gravity for best balance and therefore is SteadiCam friendly
- 7 Hex socket wrench type locking screws for best grip
- 8 Base anamorphic engine, a wide range of models are supported
- 9 RectiGrip low-profile taking lens coupling-ring fitted with a filter thread and delivering 20x increased grip over legacy 3-peg designs, including recessed locking screw for smooth anti-snap operation

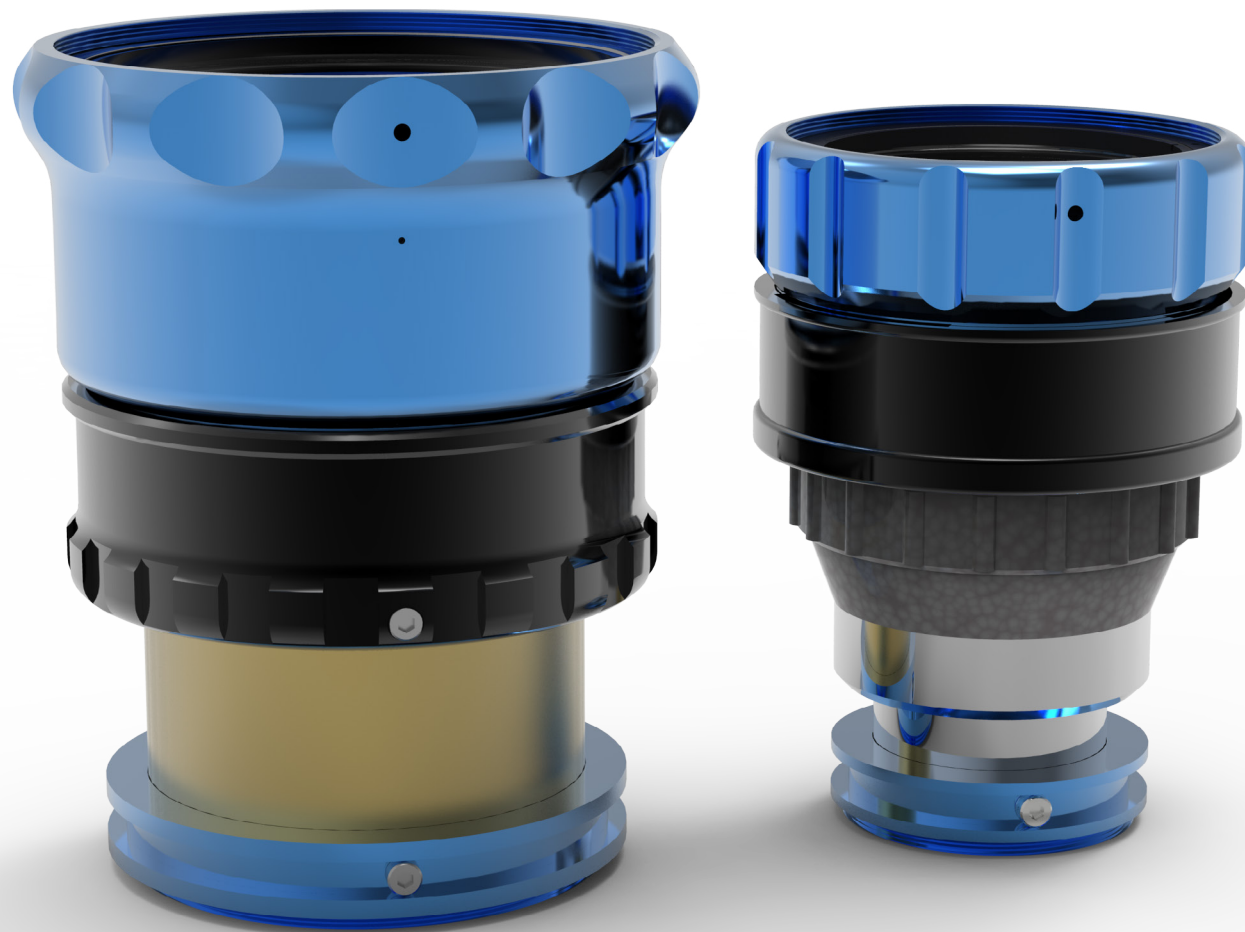


- 10 Rectilux custom optics are optimised for highly detailed corner to corner performance
- 11 Grease guard prevents the possibility of grease from the helicoid migrating into the optical chain and provides a clean environment for the optics to function without issues.
- 12 Ten start helicoid for extreme stability and smooth focus with negligible backlash for precise and repeatable focus pulls, especially important when shooting with wide open apertures
- 13 Internal coupling rings. Designed to provide double support for the base anamorphic engine at the front and at the rear. The front coupling ring is threaded to provide an intimate and highly concentric connection aligned with the optical axis. Some base anamorphic engines require a second coupling ring and together they provide a solid keystone upon which Rectilux 3FF is rigidly supported. Each Rectilux 3FF is supplied with a coupling ring set and RectiGrip for the chosen base anamorphic engine

RECTILUX 3FF SERIES

595* UKP

449* UKP



Plus Shipping

*coupling ring sets at
additional cost

**THE ORIGINAL
SINGLE FOCUS
ATTACHMENT
FOR ANAMORPHIC
PROJECTION LENSES**

About Rectilux

Rectilux began at the dawn of the DSLR video age. Already, I had amassed a large collection of vintage anamorphic projection lenses as I was fascinated by the look they gave to digital footage. I had a desire to convert them to single focus and began a project to develop what is in effect a focusing dioptre.

The concept is quite easy to understand. First the anamorphic lens and the taking lens are both focussed to infinity, so in turn they expect to see an image also at infinity in order to relay this image to the sensor of the DSLR. That's where the focusing dioptre comes in. It creates a virtual upright image at infinity depending upon the axial separation of its lens elements.

This axial separation is commonly known as focusing. Therefore to focus on a near object the lens elements are moved further apart and vice versa.

At all focus points the focusing dioptre always creates a virtual upright image at infinity, so the anamorphic lens and the taking lens can see it clearly.

Therefore the quality of the glass in the focusing dioptre governs what the anamorphic lens and taking lens sees.

In October 2012 as the original developer of the concept of using this method to provide single focus operation to anamorphic projection lenses, I was the first to publish the concept on the <http://personal-view.com/> forum together with a lens diagram illustrating how this can be achieved.

By August 2014, I had already hand built a small batch of fully working [Golden Samples](#) based around the Moller 32/2x CinemaScope, signalling the birth of Rectilux 3FF.

Now the time has arrived for the production versions of Rectilux 3FF to take the stage.

Rectilux single focus attachments are based on my original designs taking into consideration the needs of the film maker and photographer.

The main benefits include:

Performance
Optical quality
Smooth focusing
Weight
Size
Balance
Build quality
Ergonomics and handling
Attractive thoughtful design
Quick and easy swap out of anamorphic engines
Dedicated support for chosen anamorphic engine. 10 models supported and the list is growing.

John Barlow
July 2014/December 2014

The Rectilux Promise

In addition to the one year guarantee, Rectilux offers service and support. The uniqueness of Rectilux 3FF means worry free ownership when it comes down to service.

I offer a return to base, full clean, lube and adjustment (CLA) service when necessary and in the case of repair also maintain a spares holding to keep you going.

I am devoted to excellence in customer service. At all times customers are dealing with a real person with a real address, you can check where I am based and I even provide you with a Google map to help you locate me on the website given below.

Rectilux Optics

Rectilux optics are optimised in computer to provide minimum spherical aberration and chromatic aberration across the focusing range with highly detailed resolution preserved across the frame, the index and curvature of the glass is also geared toward a useable stroke length and focus throw.

In manufacturing, Rectilux optics start as optical blanks which are then ground and polished in the traditional manner. It takes 60 days to polish and coat a batch of Rectilux optics and during this process the optical parameters are frequently checked using expensive test equipments provided by Trioptics a world leader in optical measurement and manufacturing technology.

60 days polishing is indicative of the supreme quality which goes into these optics. Approximately two thirds of the manufacturing cost of each Rectilux is in the optics.

It is for this reason that Rectilux models feature a bulbous strengthened front section to protect these expensive optics.

Rectilux Style

Each Rectilux model possess a unique styling which is a balance between handling and sheer good looks. It is well known that a shooter's favourite lens is the one that feels good to use, has superb performance and looks the part. Rectilux addresses all these desirable features in one hit. Rectilux has also been designed for easy swap-

out of base anamorphic engines to allow different looks and flares as part of your shooting aesthetic,

Ten scopes are supported from the get go and more are planned.

It literally takes less than one minute to swap out anamorphic lenses.

Rectilux Engineering

All Rectilux models are sculptured in the manufacturing process from solid aviation grade 6061 aluminium. The housings are designed in CAD and visualised in 3D to check fit and tolerance. Following this the CAD files are sent to the precision engineers for manufacture using modern CNC hardware. Following this the raw metal parts are then anodised to the desired

colour and finish.

When the housings and parts have passed through quality control they are sent to the optics engineers for precise fitment of the optics which then undergo further quality control.

After this the assemblies are packed and shipped to customer. There are many suppliers and people involved in the production of each Rectilux.

To make sure everything runs like clockwork, the whole process is managed using established Project Management procedures.

Recognised carriers are used for shipping with full tracking information available online.

<http://www.trioptics.com/products/>

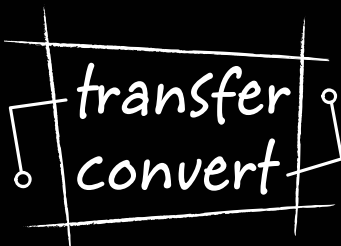
WEB <http://www.transferconvert.co.uk/cinermania/cinemascope.html>

BLOG <http://rectilux.com/>

PARTNER <https://www.shapeways.com/shops/cinermania>

SOCIAL <https://www.facebook.com/pages/Rectilux/>

Copyright John Barlow © 2014-2015 All Rights Reserved
Patent Pending All trademarks per respective owners



CINEMANIA